

## CHANGING THE WAY INFRASTRUCTURE IS DEVELOPED BY LEVERAGING INNOVATION IN TODAY'S DIGITAL AGE

**Led and funded by MDBs, SOURCE is an infrastructure project development and project data collection platform with servers under United Nations jurisdiction.**

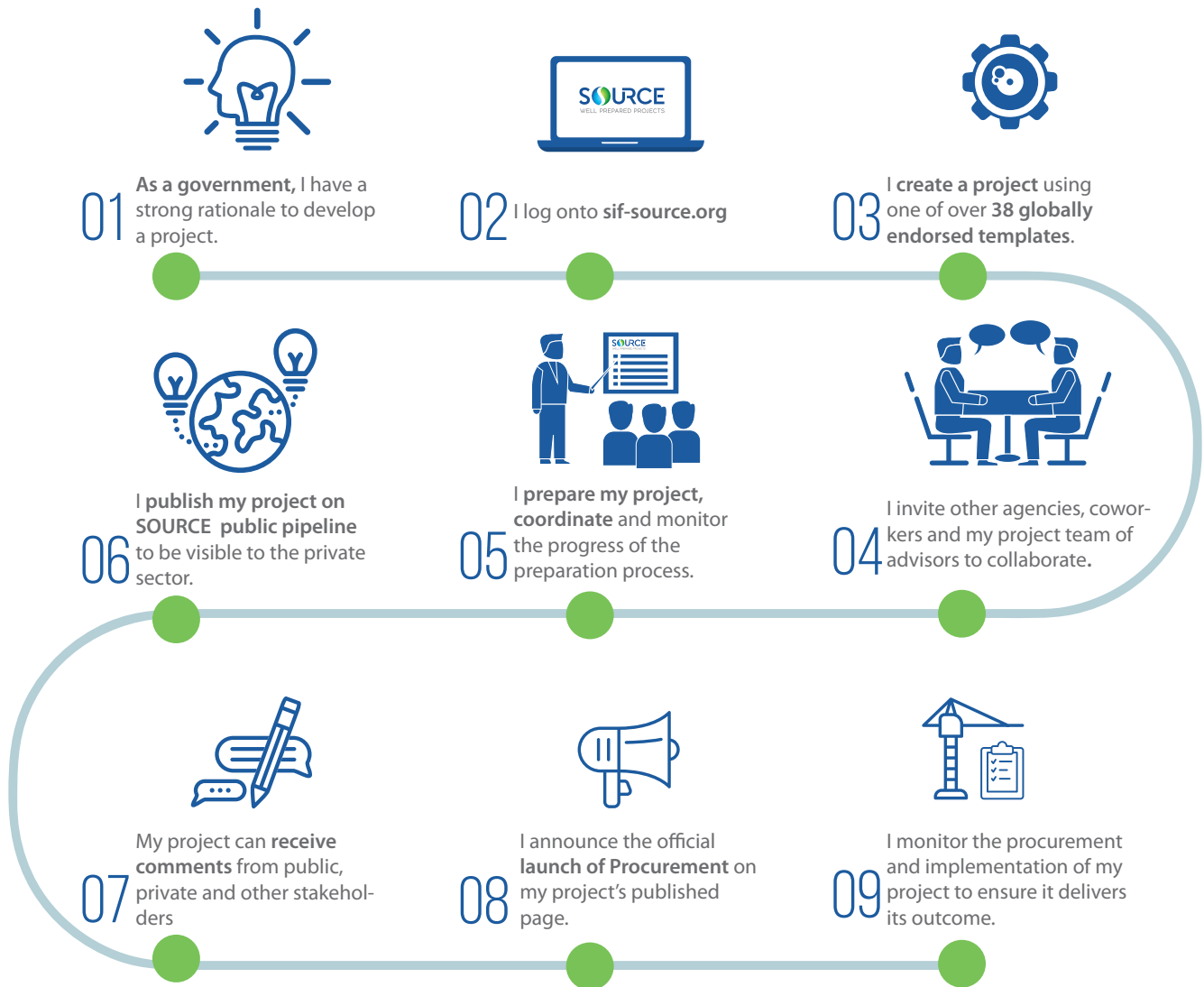
**Through its integration into governments and IFIs' operations across the project cycle, SOURCE acts as a trusted, secured collector and repository of project data covering legal, governance, economic, financial, technical and ESG dimensions.**

**SOURCE's structured data may be used to develop automatic analytics and indicators on the performance and sustainability of infrastructure, and be shared with other global initiatives such as GEMs to develop benchmarks against other datasets.**

**Delivering for scale and consistency, SOURCE operates at two different levels:**

- 1. Project preparation and management software.** At the government level, SOURCE is an online, scalable, collaborative, and secure working software, providing guidance and capacity support for public project teams, from definition to implementation, as well as data and project management tools. SOURCE brings transparency and consistency in the project development cycle and provides an effective communication platform for specific project engagement and information between government preparation agencies, private sector contractors, bidders, financiers and civil society, which eventually reduces project preparation and transaction costs and improves disclosure.
- 2. Global Delivery Platform.** At the global level, SOURCE acts as a trusted, secured collector and repository of government project data across the project cycle, with servers under United Nations jurisdiction to address increasing data sovereignty and security concerns. Its structured yet customizable approach for infrastructure project data allows SOURCE to connect databases, initiatives and platforms, as well as to integrate and harmonize project preparation-related standards and knowledge products. Looking ahead, SOURCE will generate data-based trends for pre-agreed indicators and provide data for analytics in compliance with its legal obligations with all relevant, respective data owners (MDBs and governments).

# Project Lifecycle in SOURCE



The platform is available to all government agencies. Go to [www.sif-source.org](http://www.sif-source.org) to

Register and access SOURCE,  
a global joint initiative from Multilateral Development Banks, in response to the G20,  
to develop sustainable, bankable and investment-ready infrastructure projects  
by improving project preparation

Developed and funded by

User Name

Password

[Sign In](#)

Forgot your password? [Click here](#)

[Register](#)

Support: [support@sif-source.org](mailto:support@sif-source.org)  
Copyright © 2017 Sustainable Infrastructure Foundation  
Service Agreement | SIF-SOURCE Public Site

At the creation of the project, a bespoke template is created in accordance with the geographic location, type of infrastructure and project scope.

**SOURCE**

**Create Project: Initial Information & Estimation**  
\* All fields are mandatory

Project Name \*  
Enter project name

Sector \* Subsector \*  
[Dropdown] [Dropdown]

Territory \* City \*  
[Dropdown] [Dropdown]

Description \*  
Enter project description (1500 characters max)

Do you envisage a Public Private Partnership (PPP) as a possible way to develop the project? \* [Dropdown]

Type of project \*  
☐ New  
☐ Expansion  
☐ Refurbishment/Replacement  
☐ Operation & Maintenance

Level of Public Sector \*  
☐ City/Municipal  
☐ Provincial/State  
☐ National/Federal

Public Sector \*  
[Dropdown]

[→ Create Project](#)

*Project creation form*

SOURCE covers 38 types of infrastructure accross 5 sectors:



**ENERGY**

Biomass, Dam, Geothermal High Temp, Geothermal Low Temp, Geothermal Medium Temp,Hydro Run-of-River, Solar Array, Wind Farm Offshore, Wind Farm.



**SOCIAL INFRASTRUCTURE**

Hospital, Housing, Prison, School, Theme Park.



**WATER & WASTE**

Desalination, Irrigation, Solid Waste Facility, Waste Water Treatment, Water Supply Infrastructure.



**URBAN SERVICES**

District Heating, Energy Efficiency in Buildings, Smart City, Street Lighting.



**TRANSPORT**

Airport, Bridge, Bus Rapid Transit, Car Park, Dry Port, E-bus, Highway, Intercity Rail, Light Rail Transit, Mass Rapid Transit, Metro, River Ferry, Road, Seaport, Tunnel



## Beta Desalination

Your role: Project Manager

[Home](#) [Stage 1](#) [Stage 2](#) [Stage 3](#) [Stage 4](#) [Stage 5](#) [Stage 6](#) [Stage 7](#) [Stage 8](#)

Build a desalination facility

[Edit](#)

## SECTOR / SUBSECTOR

Water &amp; Waste / Desalination

## TYPE OF PROJECT

New

## POTENTIAL PPP

Yes

## APPROXIMATE CAPITAL COST

50,000,000 USD

## TERRITORY / CITY

Mauritius / Bel Air Riviere Seche

## LEVEL OF PUBLIC SECTOR

Provincial/State

## CREATED / MODIFIED

January 2018 / 27 June 2018

## Stages

1. Project Definition



2. Project Investigation



3. Options appraisal



4. Business Case



5. Procurement Process



6. Financial Process



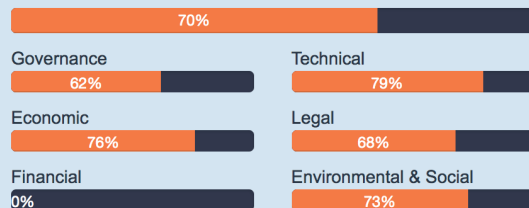
7. Work Period



8. Operation Period



## Project Preparation Status (stages 1 to 4)



## My Tasks

[+ Add a New Task](#)  
[All My Tasks](#)  
[Team Tasks](#)

## Project Team

## Project Manager

Project Manager

## Deputy Manager

Project Deputy

## Member

Public Sector

Consultant 1

Consultant 2

Public Alternate

## Viewer

[+ Invite a Deputy Manager](#)[+ Invite a User](#)

## Project Comments

 test  
12-Feb-2018 10:50 test1  
13-Mar-2018 15:53

## Project Documents

## Questions Documents

Tender doc	28-Mar-2018	Project Manager
PACBP	26-Mar-2018	Project Manager
EIA	21-Mar-2018	Project Manager
TENDER	16-May-2018	Project Manager

[+ Add a New Document](#)  
[+ Create a New Folder](#)

## Last Updates

Project Manager	Stage 3 - Environmental ...	29-May-2018
Project Manager	Full report generated	16-May-2018
Project Deputy	Stage 3 - Environmental ...	28-Mar-2018
Project Deputy	Stage 6 - Financial	28-Mar-2018
Consultant 1	Stage 6 - Financial	28-Mar-2018
Project Manager	Stage 5 - Governance	28-Mar-2018
Project Manager	Stage 5 - Governance	28-Mar-2018
Project Manager	Stage 5 - Governance	28-Mar-2018
Project Manager	Stage 5 - Governance	28-Mar-2018
Project Deputy	Stage 4 - Financial	26-Mar-2018

[History of modifications](#)

## Key Questions Answered?

Stage 1: Project Definition

- ✓ Procuring authority definition
- ✓ Government PPP assessment
- Project location definition
- ✓ Availability of technical surveys
- Construction cost evaluation
- ✓ Project operator definition
- Operation and maintenance cost assessment
- ✓ Funding structure decision
- ✓ Scope of work assessment
- ✓ Water feeding development plan approval
- ✓ Project objective definition
- ✓ Plant capacity assessment



# Key Benefits for project teams

A global, reliable, cost-efficient, multilateral , MDB-led initiative that delivers operational tools that governments need for preparing quality infrastructure.



## Multilateral connectivity:

- Link all project stakeholders (government agencies, MDBs, advisors) on a same platform
- Connect project developers to project preparation facilities and investors



## Standardization:

- Standard protocol for government agencies to screen, define and prepare projects
- Consistent presentation of project characteristics and status for private sector (« common language »)



## Project Management:

- Robust and consistent monitoring of project progress, including readiness assessment
- Streamlined collection, aggregation and display of critical information provided by the users



## Capacity strengthening:

- Multi-sectorial and thematic guidelines through SOURCE questionnaires
- Direct access to dedicated knowledge products along the preparation process



## Transparency and accountability:

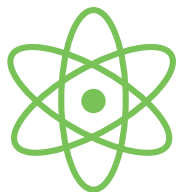
- Individual Level: Log of all inputs and actions (or absence of)
- Project Level: Track of changes of timeline, project cost, etc. across project life



## Project promotion and visibility:

- Streamlined and consistent pipeline of projects
- Increased projects' visibility for national and international investors

# Frequently Asked Questions



## **“Is SOURCE a tool, a product, a standard?”**

SOURCE delivers so-called “best practices”, global standards or public goods integrated and/or harmonized from other bodies and also acts as a repository of project data for preparation teams. It can help connect projects to initiatives or potential preparation partners and therefore it isn’t for comparison to other preparation-related standards, tools, principles or facilities on an “apples to apples” or “apples to oranges” basis, but rather SOURCE is a multilateral-led fruit delivery truck service.

## **Do I need to have all my project’s information ready before I should start using SOURCE? Is SOURCE a PPF?**

No need to wait for all data in hand and teams don’t need external support to start using SOURCE. SOURCE is designed to support teams throughout the project cycle and be used as a guidance from the outset. SOURCE certainly doesn’t replace project preparation facilities’ support nor transaction advisors. SOURCE provides preparation teams and advisors a common, informed, coordinated, connectable, secure and consistent online workspace – helping to guide and highlight on key issues throughout preparation, and informing better decision making.



## **“How much does SOURCE cost?”**

The cost of maintaining, developing and promoting SOURCE is primarily funded by MDBs, PPFs and donors, with an increasing financial contribution from private sector infrastructure players. This allows Sustainable Infrastructure Foundation to make the platform available for free to all government agencies from developing and emerging countries

## **“What is SIF, how does it work?”**

SIF is a not-for-profit Swiss foundation headquartered in Geneva, which coordinates the provision of SOURCE. It is led and financed by MDBs which approve the operational strategy and budget of the platform. It is also supported by two Committees representing the public and private sectors, providing support and guidance to its development.



## **“What about data sovereignty and security?”**

SOURCE’s data are under United Nations jurisdiction, with its servers hosted by the UN in Geneva. From an IT perspective, data security and privacy are managed at three different levels to: i) protect against external unauthorized access, ii) keep each project workspace private and iii) manage permissions between team members.

## **SUSTAINABLE INFRASTRUCTURE FOUNDATION**



<https://sif-source.org>



[info@sif-source.org](mailto:info@sif-source.org)



<https://public.sif-source.org>



13 ch. des Serves  
1228 Geneva, Switzerland