

Innovating in the digital age to change
the way infrastructure is developed

SOURCE a joint global initiative from Multilateral Development Banks, in response to G20

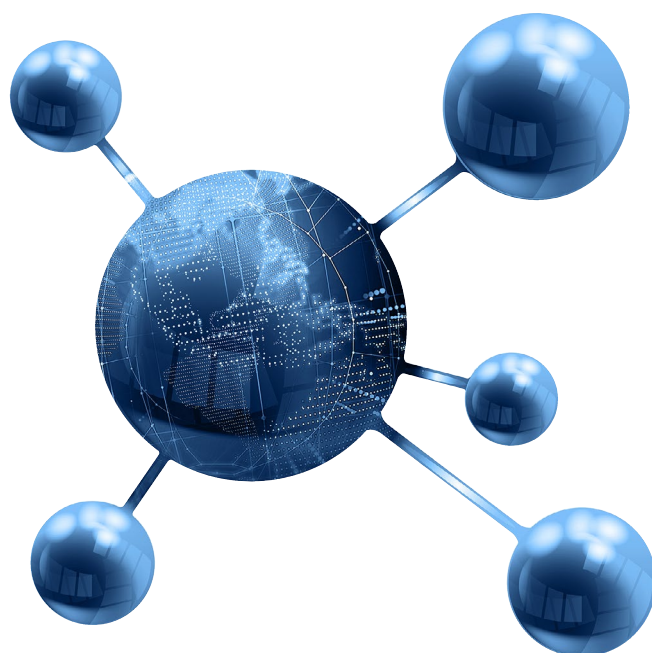
The lack of well-prepared projects is one of the major obstacles to mobilise and catalyse private finance in infrastructure.

The G20 leaders have expressed their commitment to prioritise the promotion of solutions that bridge the global infrastructure gap and facilitate sustainable and resilient infrastructure development.

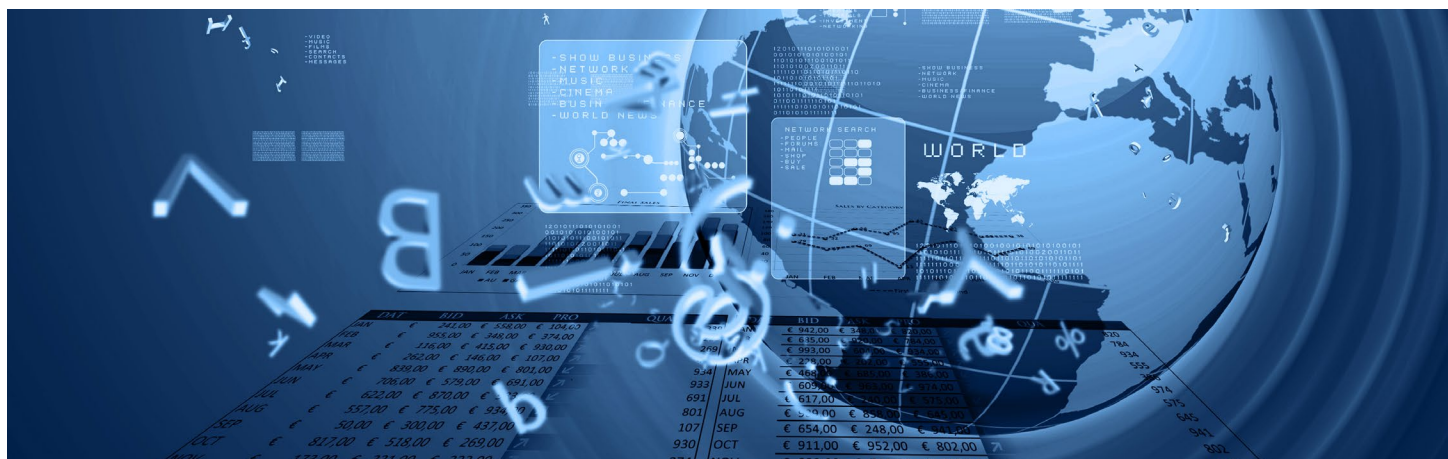
Given the scarcity of public resources and the key role that the private sector is to play in achieving sustainable economic development, the G20 has praised Multilateral Development Banks to foster collaboration among themselves, help developing countries improve their technical capacity to better assess infrastructure risks, take concrete measures to boost infrastructure investment and improve quality and bankability by strengthening project preparation.

It is in this context that Multilateral Development Banks (MDBs) have come together to jointly develop, with support of Sustainable Infrastructure Foundation (SIF), one of the most advanced and concrete solutions, which allows aggregating and processing of information on all dimensions of infrastructure project preparation, with the aim of crowding-in private sector finance.

This solution called SOURCE, initiated in 2010 by the Asian Development Bank (AsDB), is a result of seven years of research and development, and several thousand contributions from the world's infrastructure sector experts. SOURCE is a global public support platform that is free for national and subnational governments to prepare their infrastructure projects. Tested internationally by MDBs in 6 pilot countries between 2013 and 2015, it was then globally launched on January 27, 2016; and is now used by 42 governments.



Scaling up and changing the way infrastructure is developed by leveraging innovation in today's digital age



A sustainable project preparation and delivery platform

SOURCE's ultimate goal is to support the preparation and development of infrastructure projects that integrate the Sustainable Development Goals (SDGs). SOURCE endeavours to foster the adoption of the 2030 development agenda, on a global scale, by enabling, through a series of standardised templates, the preparation of infrastructure projects that take into account the local socio-economic fabric, social development, resources and energy efficiency rationales, environmental impact and climate mitigation, to quote a few.

A global cooperation platform

SOURCE is a global collaborative platform that enables all the infrastructure stakeholders - multilateral development banks, development-financing institutions, infrastructure investors, consultancy firms, contractors and lenders - to work together with the common goal of bridging the project preparation and development requirements of the private and public sectors, in order to foster infrastructure investment and delivery.

A global learning platform

SOURCE is operated as a laboratory that organically develops and refines by processing the essential from global data. SOURCE acts as a global knowledge platform that provides its users with project preparation best practices, by collecting and aggregating the standards and returns on experience that are developed by public and private infrastructure professionals globally.

Product Description

SOURCE is an online multifunction platform that provides support to governments and public agencies with:



A project preparation tool



A project selection tool



A project coordination tool



A project financing & funding tool



A project-monitoring tool

SOURCE is structured around a series of questions encompassing all areas of a project lifecycle, starting from the definition to the operation period. The questions cover the following project dimensions: governance, technical, economic, legal, financial, environmental and social in accordance with the UN SDGs. Users follow a step by step process that is organised in stages:

Stages 1 to 4 for project preparation

Stages 5 and 6 for project tendering preparation

Stage 7 for works

Stage 8 for operations

SOURCE comprises today, 36 sub-sector templates. It has completed its third global upgrade, which notably provides further support to public entities in managing risk, as well as in integrating SDGs into the project preparation process.

SOURCE is a flexible tool that adapts to the specific needs and requirements of the users and public agencies across the world. To do so, SOURCE is tailored and adapted to reflect the reality of individual countries' regulations, languages and experiences. It is currently available in nine languages - Arabic, Bahasa, English, French, Mandarin, Mongolian, Portuguese, Spanish and Vietnamese, with more languages to be added in the coming months.

SOURCE currently hosts the preparation of 154 infrastructure projects, that are worth USD 30+ billion of disclosed value; it supports 1,100 users across 42 governments and the number of persons trained in its use are increasing steadily.

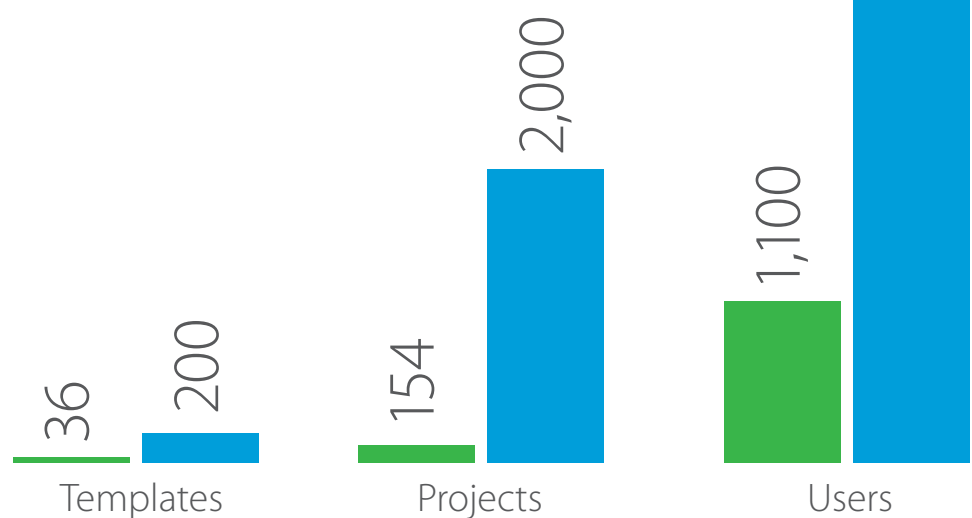
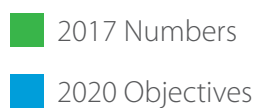
Product Description

SOURCE is looking at significantly increasing the number of projects published on its platform with the aim to become a global data centre for the private sector and to further attract potential investors.

By the year 2020, the Council of the Sustainable Infrastructure Foundation has set the objective of developing 200 templates, having 10,000 users and 2,000 infrastructure projects on SOURCE.

By committing to promote the use of SOURCE internally and among their client governments, the MDBs will play a key role in expanding the number of projects that will be prepared with SOURCE.

SOURCE Roadmap



SOURCE is an international support system for infrastructure project preparation and development that brings to its users the following benefits:



Well-prepared project

The project preparation process is supported by a standardised project definition template resulting from an advanced selection of best international practices. All needs and requirements to achieve a well-prepared project are provided through this advanced methodology.

Enhanced project management

The platform ensures robust data from the outset and the decision-making by project managers is supported by a streamlined collection, aggregation and display of critical information provided by the users.

Interactive sharing and access

Support collection of data and sharing of information.
Real-time access to the project platform through an interactive interface.
Up-to-date, latest version of the project available live, to all users.
Content can be submitted for review to project managers by users.

Streamlined user experience

Simple way to interact with users and process data.

Multilingual interface

Effective content management can be achieved through multi-language templates.

SOURCE Added-values

Confidential and secure

Any proprietary information embedded in the system is protected.
Project data is accessed through specific and highly secured access-levels.

Flexible software

Open, scalable architecture, including web services support, that can connect with project presentation platforms.

Fostering project outreach

Well-prepared quality label supports the engagement with the project stakeholders i.e. project preparation pipelines, IFIs, private sector, etc.

Fostering project financing

Publishing the well-prepared project externally, would raise the private sector. interest, as the project development is likely to be potentially less risky and costly.
Project development is supported by informing on project eligibility to private and public financing facilities.

Fostering project funding

The platform supports a government in assessing and selecting the possible options at its disposal to cover the project expense.

Supporting project monitoring

The platform supports the assessment of the project during its preparation, procurement, development and operating phases.

Assessment of project portfolio

An assessment and selection of the most viable and feasible projects among a government's project portfolio can be made through a set of reliable and advanced standardised parameters.

Supporting project analytics

The platform processes data and analytics, which support the identification and assessment of trends, pipelines of projects and markets achievements, in various jurisdictions of the world.

Free support system

The platform is an international public good that is free for national and subnational governments to support their infrastructure project preparation capacities.

The development and management of SOURCE is coordinated by the Sustainable Infrastructure Foundation (SIF)

SOURCE is jointly developed and funded by major MDBs: the African Development Bank Group (AfDB), Asian Development Bank (AsDB), Brazilian Development Bank (BNDES), Development Bank of Latin America (CAF), Development Bank of South Africa (DBSA), European Bank for Reconstruction & Development (EBRD), Inter-American Development Bank (IaDB), Islamic Development Bank (IsDB), Public–Private Infrastructure Advisory Facility (PPIAF) and World Bank Group (WBG).

The MDBs form SIF's Advisory Board, with the mandate to provide leadership in the development of SOURCE and foster engagements with governments and the private sector.

The continuing enhancement of SOURCE, also relies on the substantial contributions from its partners: the Africa Investor (AI), Carbon 60, European Investment Project Portal (EIPP), India Infrastructure Finance Company Limited (IIFCL), Infrastructure Sustainability Council of Australia (ISCA), Private Infrastructure Development Group (PIDG), Regions of Climate Action (R20) and the Committee for Acceleration of Priority Infrastructure Delivery (KPPIP).

SOURCE also benefits from the instrumental inputs from a large range of infrastructure specialists, including: Aecon, Allianz Global Investors, Atkins, Bechtel, BNP Paribas, Bombardier Transportation, Caisse de dépôt et placement du Québec (CDPQ), Capgemini, Confederation of International Contractors' Associations (CICA), Eiffage, Environmental Resources Management (ERM), Ferrovial, Global Green Growth Institute (GGGI), Harith Partners, International Federation of Consulting Engineers (FIDIC), International Monetary Fund (IMF), Marsh, Mott MacDonald, Pinsent Masons, PricewaterhouseCoopers (PwC), Sumitomo Mitsui Banking Corporation (SMBC), The Organisation for Economic Co-operation and Development (OECD), Veolia Environnement, Vinci Group and World Economic Forum (WEF).

The development and management of SOURCE is managed by the Sustainable Infrastructure Foundation (SIF), a not-for-profit Swiss foundation headquartered in Geneva, Switzerland. SIF is also mandated to provide capacity building to global users and to conduct the progressive adoption of SOURCE by governments, public agencies and relevant international organisations.



Sustainable Infrastructure Foundation

2 Avenue Henri-Dunant
1205 Geneva, Switzerland

Email: contact@sif-source.org

Follow us



www.public.sif-source.org